

## FOR COMMENT - TML PROPOSED SUBCOMMITTEE REVAMP

At the recent AGM the Executive and Management Committees were expanded and a motion carried to revise the current subcommittees to better manage distribution of workload and continued successful delivery of projects.

TM Landcare Management Committee is now seeking comments on the proposed changes to current subcommittees.

### WHY DO WE NEED TO REVAMP OUR SUBCOMMITTEES?

TM Landcare has a big job to do to protect and enhance the mountain's natural environment. The group's success to date means we are doing more than ever before. If we are to continue to be successful we will need to be more efficient and effective at how we get things done.

#### **Many hands make light work.**

By changing our structure and creating more but smaller sub-committees we hope to encourage and enlist input from people who may not have the time to get involved in big projects. Each sub-committee has a number of related projects that individuals can become involved in.

#### **We need champions.**

The new structure proposes that each management committee member becomes a champion for one of the sub-committees so each area of the organisation has a voice in decisions being made by the management committee.

### YOUR SAY

Do you think this structure should be different or have we missed something? Tell us how and why. A copy can be downloaded from our website at: [www.tamborinemtnlandcare.org.au](http://www.tamborinemtnlandcare.org.au) or picked up from the Piccabeen Bookshop.

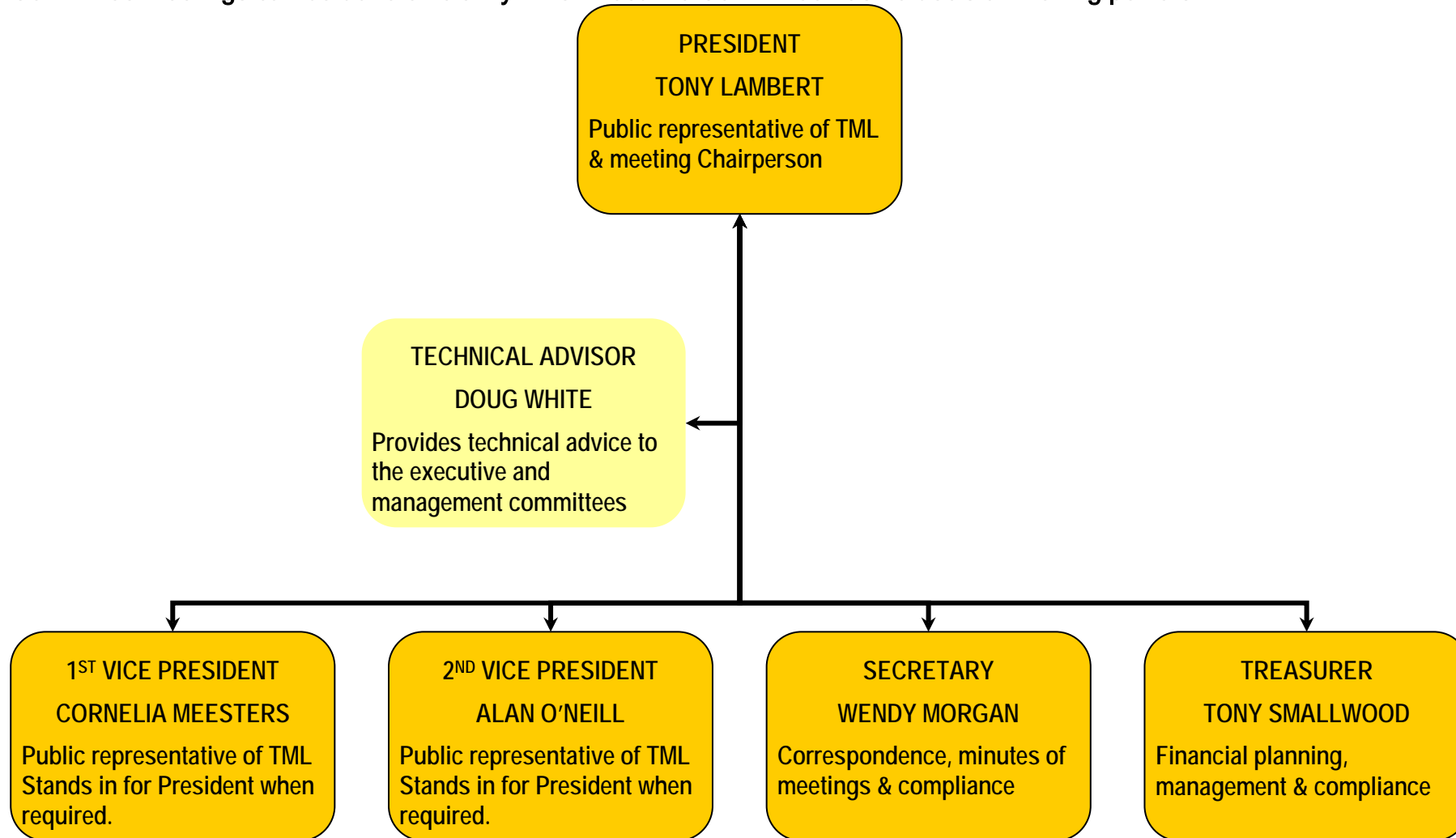
Comments can be emailed by Monday 6<sup>th</sup> October 2008 to the Secretary at [secretary@tamborinemtnlandcare.org.au](mailto:secretary@tamborinemtnlandcare.org.au) or posted to: PO Box 161, North Tamborine Queensland 4272.

All comments will be considered and the final structure determined at the October Management Committee Meeting. Minutes will be posted at the Piccabeen Bookshop.

# FOR INFORMATION

## CURRENT EXECUTIVE COMMITTEE (AS VOTED AT 2008 AGM) & ROLES

The Executive Committee ensures all required information and issues are to hand and clarified so that decision making at Management Committee meetings can be done efficiently. The Executive Committee has no decision making powers.



# FOR INFORMATION

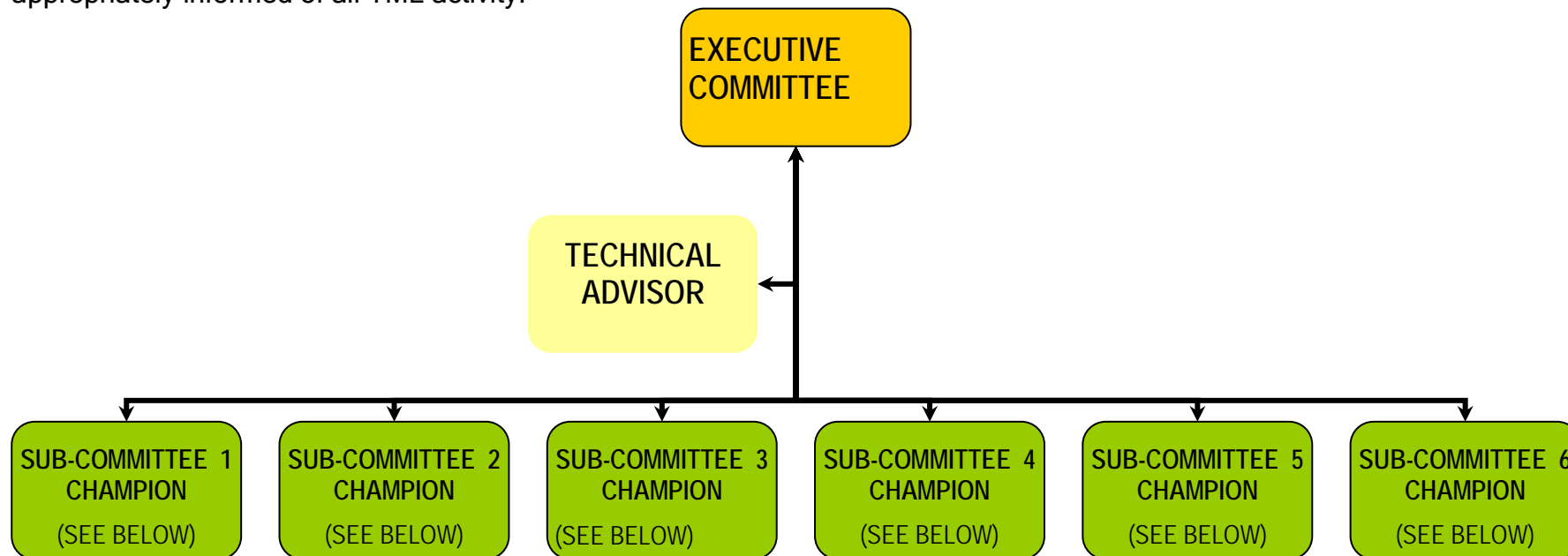
## NEW EXPANDED MANAGEMENT COMMITTEE (AS VOTED AT 2008 AGM) & ROLES

The Management Committee (MC) is constitutionally responsible for the decision making of the organisation. Each MC & Executive Committee member has an equal vote. The Technical Advisor is not an MC member and does not vote.

It is proposed that each MC member is a “Champion” of a proposed sub-committee. The role of a Champion is to:

- provide monthly updates on the activity of the sub-committee at MC meetings;
- put forward and support the aspirations and issues of the sub-committee and its members; and
- provide information and feedback from the MC back to the sub-committee’s membership.

Each Champion will inform and advise a nominated Executive Committee member to ensure they are able to confidently represent the interests of their sub-committees in forums outside of TML. The Executive Committee members are to ensure the President is appropriately informed of all TML activity.



# FOR COMMENT

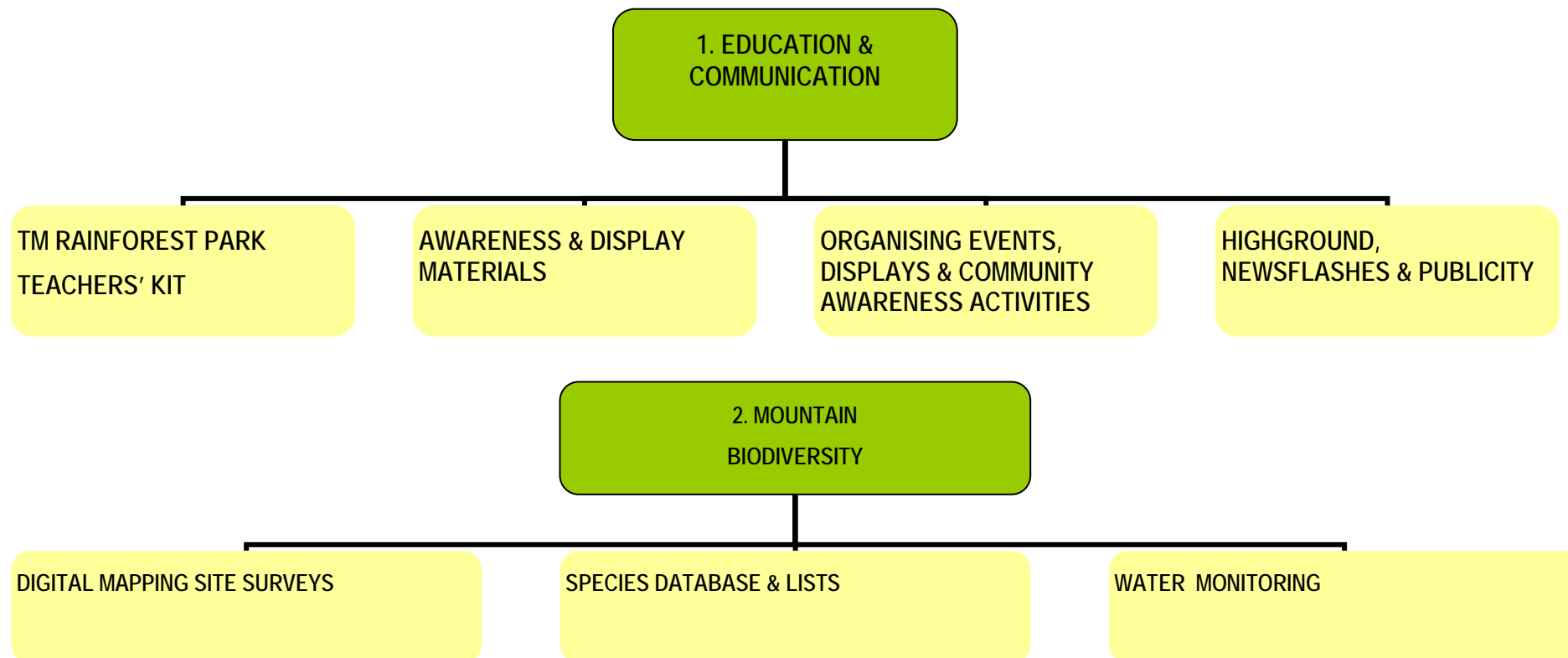
## PROPOSED SUB-COMMITTEES & ASSOCIATED PROJECTS

NOMINATED EXECUTIVE MEMBER: ALAN O'NEILL (VICE PRESIDENT)

SUB-COMMITTEES: Meet monthly, generally the week prior to the MC meeting and are chaired by the MC "Champion". If the Champion is not able to attend an MC meeting, they may nominate a sub-committee member to report at the management committee meeting in their place however they will not have the power to vote.

The proposed structure does not preclude anyone from participating in any activity and a member may be on as many sub-committees as they wish.

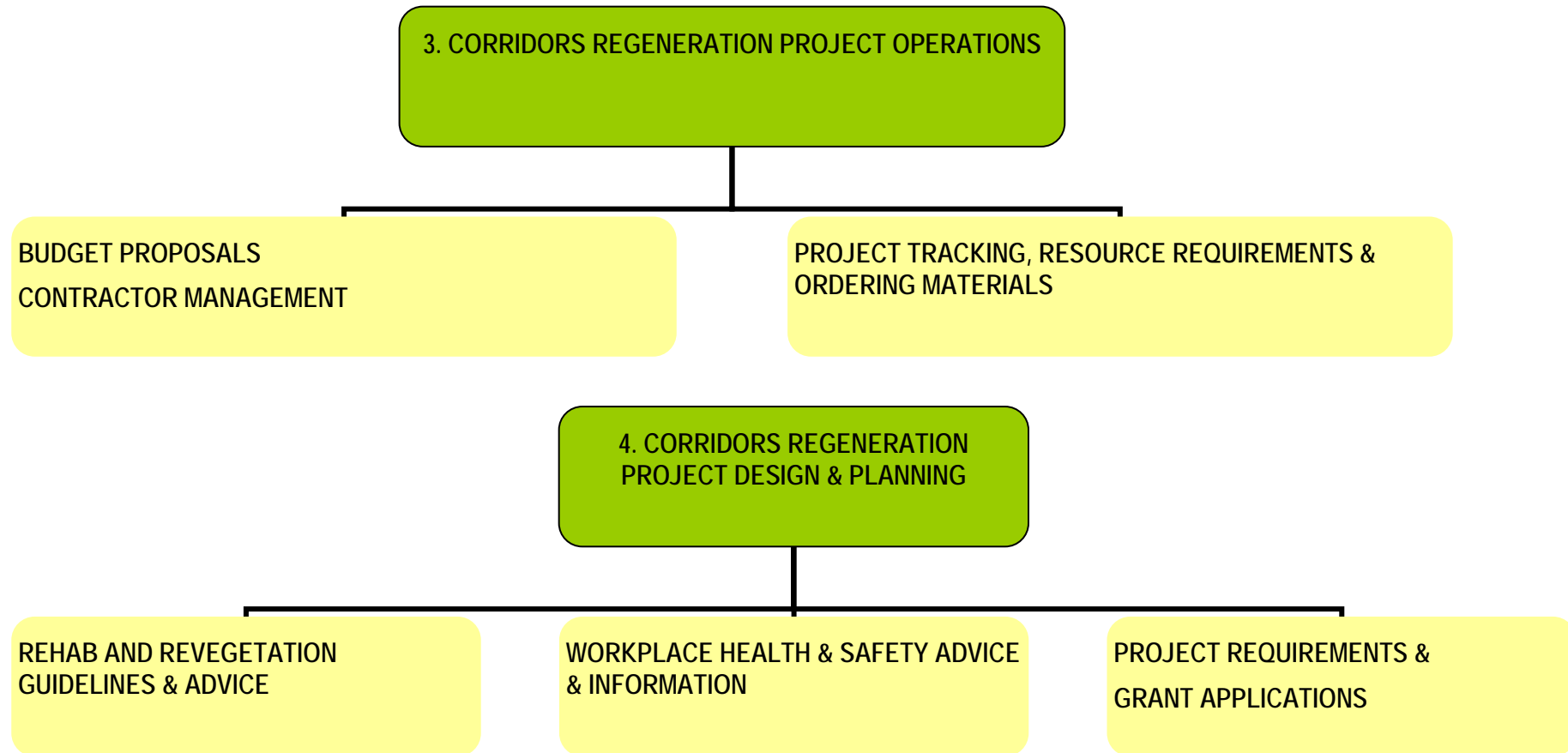
Associated projects (yellow boxes) - may occur on an ad hoc/as needs basis and may not be 'active' all the time. The boxes below indicate the projects currently being undertaken by groups of TML volunteers.



# FOR COMMENT

## PROPOSED SUB-COMMITTEES & ASSOCIATED PROJECTS

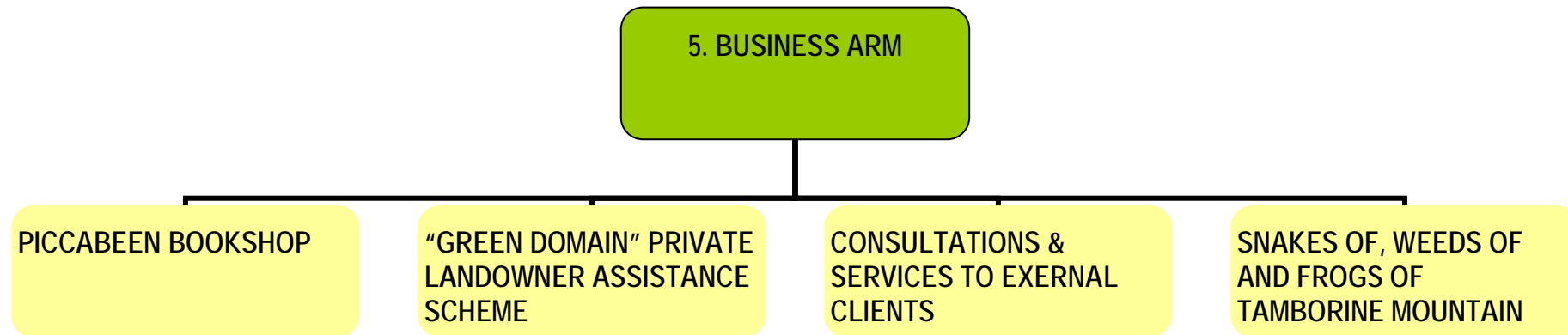
NOMINATED EXECUTIVE MEMBER: CORNELIA MEESTERS (VICE PRESIDENT)



# FOR COMMENT

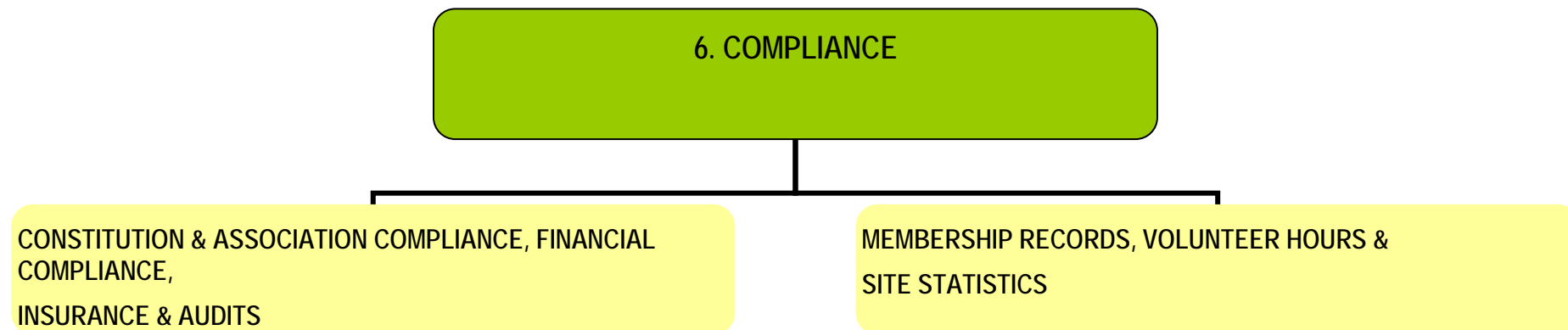
## PROPOSED SUB- COMMITTEES & ASSOCIATED PROJECTS

NOMINATED EXECUTIVE MEMBER: CORNELIA MEESTERS (VICE PRESIDENT)



---

NOMINATED EXECUTIVE MEMBERS: TONY SMALLWOOD (TREASURER) & WENDY MORGAN (SECRETARY)



# FOR COMMENT

## COMMUNICATION FLOW DIAGRAM

